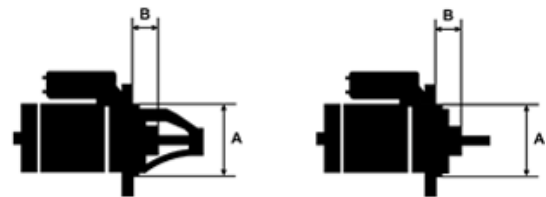
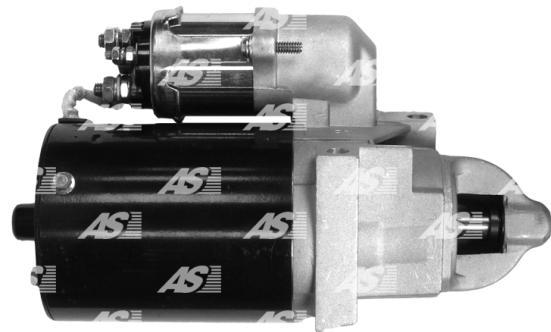
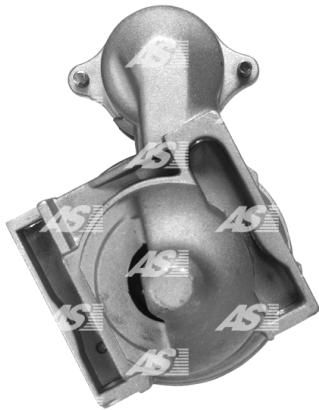


Data

AS index	S1003
Kategória	Štartéry
Výrobca	AS-PL
Náhrada za	Delco

Vlastnosti produktu

Rozmer A [mm]	68.5
Napätie [V]	12
Počet otvorov v hlavici	2
Počet zubov (zapadá do)	9
Otáčka štartéra	CW



Referenčné číslo (30)

Number	Výrobca
111034	CARGO
10455011	DELCO
10455013	DELCO
10455016	DELCO
10455042	DELCO
10455050	DELCO
10455054	DELCO
10455070	DELCO
10465065	DELCO
1998427	DELCO
1998524	DELCO
9000910	DELCO
DRZ5153	DELCO
DRZ5155	DELCO
11832	EAI
25-1483	ELSTOCK
US858	HC PARTS
8EA732681-001	HELLA
22.0858	LAUBER
22.0858M	LAUBER

LRS01275	LUCAS
12572716	OPEL
8213330	POWERMAX
2012-003RS	RS
6313N	WAI / TRANSPO
6313R	WAI / TRANSPO
6416N	WAI / TRANSPO
6416R	WAI / TRANSPO
6419N	WAI / TRANSPO
STR80006	WOODAUTO

Využitie

CHEVROLET

Značka	Model	Typ	let	Poznámky
CHEVROLET	Astre 4.3		00.1992-00.1998	
CHEVROLET	Blazer 4.3		00.1995-	
CHEVROLET	C10 5.0		00.1985-00.1986	
CHEVROLET	C1500 4.3		00.1988-00.1995	
CHEVROLET	C20 5.0		00.1985-00.1986	
CHEVROLET	C2500 4.3		00.1988-00.1995	
CHEVROLET	Camaro 2.8		00.1985-00.1989	
CHEVROLET	Camaro 3.1 RS		00.1990-00.1992	
CHEVROLET	Camaro 3.4		00.1993-00.1995	
CHEVROLET	Camaro 3.4 V6	[L32]	12.1992-12.1995	
CHEVROLET	Camaro 5.0	[LG4]	00.1985-00.1986	
CHEVROLET	G10 4.3		00.1991-00.1997	
CHEVROLET	G10 4.3 Express		00.1996-00.1997	
CHEVROLET	G10 4.3 Sportvan		00.1991-00.1993	
CHEVROLET	G10 5.0		00.1996-00.1997	
CHEVROLET	G10 5.0 Express		00.1996-00.1997	
CHEVROLET	G20 4.3		00.1991-00.1997	
CHEVROLET	G20 4.3 Sportvan		00.1991-00.1995	
CHEVROLET	G20 5.0		00.1996-00.1996	
CHEVROLET	G20 5.0 Express		00.1996-00.1997	
CHEVROLET	G30 4.3		00.1991-	
CHEVROLET	K10 5.0 Suburban		00.1985-00.1986	
CHEVROLET	K1500 4.3		00.1988-00.1998	
CHEVROLET	K1500 5.0		00.1996-00.1999	
CHEVROLET	K2500 4.3		00.1988-00.1995	
CHEVROLET	P30 4.3		00.1990-00.1995	
CHEVROLET	S10 2.8		00.1984-00.1993	
CHEVROLET	S10 2.8 Blazer		00.1984-00.1990	
CHEVROLET	S10 4.3		00.1988-00.1995	
CHEVROLET	S10 4.3 Blazer		00.1991-00.1994	
CHEVROLET	Silverado 4.3 1500		00.1999-00.1999	

GMC

Značka	Model	Typ	let	Poznámky
GMC	C15/C1500 5.0		00.1985-00.1986	
GMC	C1500 4.3		00.1988-00.1988	
GMC	C1500 4.3 SieRa		00.1989-00.1995	
GMC	C1500 4.3 SieRa XC		00.1989-00.1997	
GMC	C1500 5.0 SieRa		00.1992-00.1997	

GMC	C1500 5.0 SieRa XC		00.1992-00.1997	
GMC	C25/C2500 5.0		00.1985-00.1986	
GMC	C2500 4.3		00.1988-00.1988	
GMC	C2500 4.3 SieRa		00.1989-00.1995	
GMC	C2500 4.3 SieRa XC		00.1989-00.1993	
GMC	C2500 5.0 SieRa		00.1992-00.1996	
GMC	C2500 5.0 SieRa XC		00.1992-00.1996	
GMC	G15/G1500 4.3 Rally		00.1991-00.1993	
GMC	G15/G1500 4.3 Savana		00.1996-00.1997	
GMC	G15/G1500 4.3 Vandura		00.1991-00.1995	
GMC	G15/G1500 5.0		00.1994-	
GMC	G15/G1500 5.0 Rally		00.1992-00.1993	
GMC	G15/G1500 5.0 Savana		00.1996-00.1997	
GMC	G15/G1500 5.0 Vandura		00.1992-00.1995	
GMC	G25/G2500 4.3 Rally		00.1991-00.1995	
GMC	G25/G2500 4.3 Vandura		00.1991-00.1995	
GMC	G25/G2500 5.0 Rally		00.1992-00.1995	
GMC	G25/G2500 5.0 Savana		00.1996-00.1997	
GMC	G25/G2500 5.0 Vandura		00.1992-00.1995	
GMC	G35/G3500 4.3		00.1992-00.1995	
GMC	G35/G3500 4.3		00.1996-00.1996	Special
GMC	G35/G3500 4.3 Rally		00.1995-00.1996	
GMC	G35/G3500 4.3 Savana		00.1996-00.1996	
GMC	G35/G3500 4.3 Vandura		00.1991-00.1996	
GMC	Jimmy 4.3		00.1995-00.1995	
GMC	K15/K1500 5.0		00.1985-00.1986	
GMC	K1500 4.3		00.1988-00.1988	
GMC	K1500 4.3 SieRa		00.1989-00.1997	
GMC	K1500 4.3 SieRa XC		00.1989-00.1997	
GMC	K1500 5.0 SieRa		00.1991-00.1998	
GMC	K1500 5.0 SieRa XC		00.1991-00.1998	
GMC	K2500 4.3		00.1988-00.1988	
GMC	K2500 4.3 SieRa		00.1989-00.1995	
GMC	K2500 4.3 SieRa XC		00.1989-00.1993	
GMC	K2500 5.0 SieRa		00.1991-00.1995	
GMC	K2500 5.0 SieRa XC		00.1991-00.1995	
GMC	P35/P3500 4.3		00.1990-00.1995	
GMC	S15 2.8		00.1984-00.1990	
GMC	S15 2.8 Jimmy		00.1984-00.1989	
GMC	S15 4.3		00.1988-00.1990	
GMC	S15 4.3 Jimmy		00.1988-00.1994	
GMC	Safari 4.3		00.1990-00.1994	
GMC	Safari 4.3 XT		00.1991-00.1996	
GMC	SieRa 4.3 1500		00.1999-00.1999	
GMC	Sonoma 2.8		00.1991-00.1993	
GMC	Sonoma 2.8 GT		00.1992-00.1992	
GMC	Sonoma 4.3		00.1991-00.1995	
GMC	Sonoma 4.3 GT		00.1992-00.1992	

JEEP

Značka	Model	Typ	let	Poznámky
JEEP	Cherokee 2.8		00.1984-00.1986	
JEEP	Cherokee 2.8 Chief		00.1986-00.1986	
JEEP	Cherokee 2.8 Laredo		00.1986-00.1986	
JEEP	Cherokee 2.8 Pioneer		00.1986-00.1986	
JEEP	Comanche 2.8 Custom		00.1986-00.1986	
JEEP	Comanche 2.8 X		00.1986-00.1986	



JEEP	Comanche 2.8 XLS		00.1986-00.1986	
------	------------------	--	-----------------	--

PONTIAC

Značka	Model	Typ	let	Poznámky
PONTIAC	Firebird 2.8		00.1985-00.1989	
PONTIAC	Firebird 2.8 S/E		00.1985-00.1986	
PONTIAC	Firebird 3.4		00.1993-00.1995	